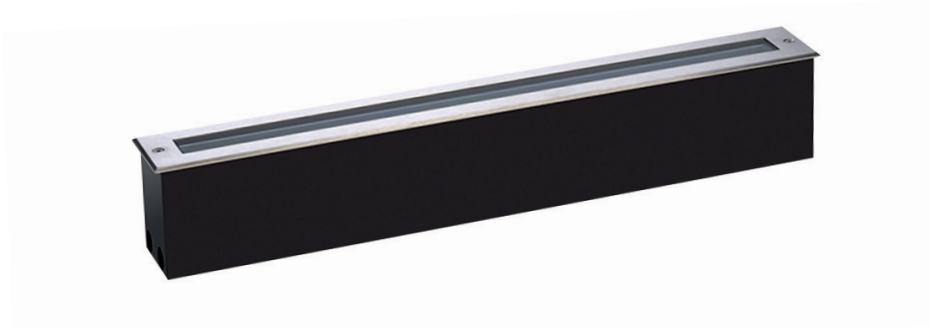


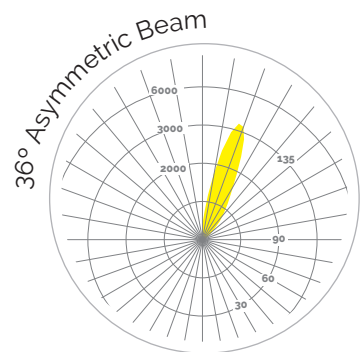
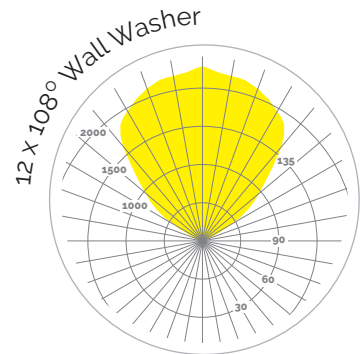
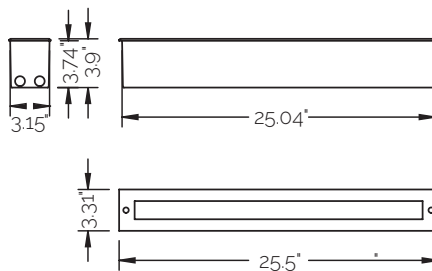


Upline 600

Linear In-Ground LED Luminaire



Versatile and slim linear in-ground uplighter for facade illumination



FEATURES

- Luminaires available with wall wash or asymmetric optics
- Wall wash optics create a continuous line of light with minimal shadow between luminaires.
- 6 x 2.5W high performance LEDs
- 120V Integral Driver
- Up to 1112 Lumens
- Up to 74 Lumens/Watt efficacy
- ETL Listed, IP67, IK10 Rated

MUL-600

ORDERING

MUL600 - 15 - - - - B - - - -

PRODUCT	POWER	LED COLOR	OPTICS	DIMMING	FINISH	MOUNTING	OPTIONAL ACCESSORIES
MEYER Upline 600 Linear In- grade LED Uplighter	15 6 x 2.5W LEDs	W3 3000K White W4 4000K Neutral White	10 12 x 108° Wall Washer A 36° Asymmetric Beam	N Non-Dim D 0-10V Dim I Dali [†] <small>[†]Consulted Factory</small>	B Black	T Overlap Trim	L Stainless Steel Louvre

CONSTRUCTION

- Die cast and extruded aluminum housing, double powder coat
- All exterior parts steel are stainless steel
- Tempered safety glass, flush with silicon gasket
- Polypropylene recess housing
- Stainless steel cable gland

SIZE AND MOUNTING

- Overall - 25.5" long x 3.31" wide x 3.9" deep
- Housing - 25" long x 3.15" wide x 3.74" deep

LEDS

- 6 x 2.5W high performance LED in 3000K or 4000K
- 80+ CRI
- 2 Step MacAdams Ellipse

COMPLIANCE

- ETL Listed, IP67, IK10

OPTIONAL ACCESSORIES

- Stainless Steel Louvre

ELECTRICAL

- 120V Integral Driver
- Power Consumption: 15W
- Factory prewired with 9' cable

FINISHES

- Polyester powder coat in Black

WARRANTY

- 5-year limited warranty.
- Complete warranty terms available at ElectrixIllumination.com

OPTIONAL ACCESSORIES

STAINLESS STEEL LOUVRE

stainless steel, to reduce lateral glare, for retro fitting, not in combination with other accessories

